

# ***Greenscapes***



**The Green Infrastructure Element  
of the Lancaster County Comprehensive Plan**

[www.co.lancaster.pa.us/planning](http://www.co.lancaster.pa.us/planning)

**Figure 1 - Regional Context**

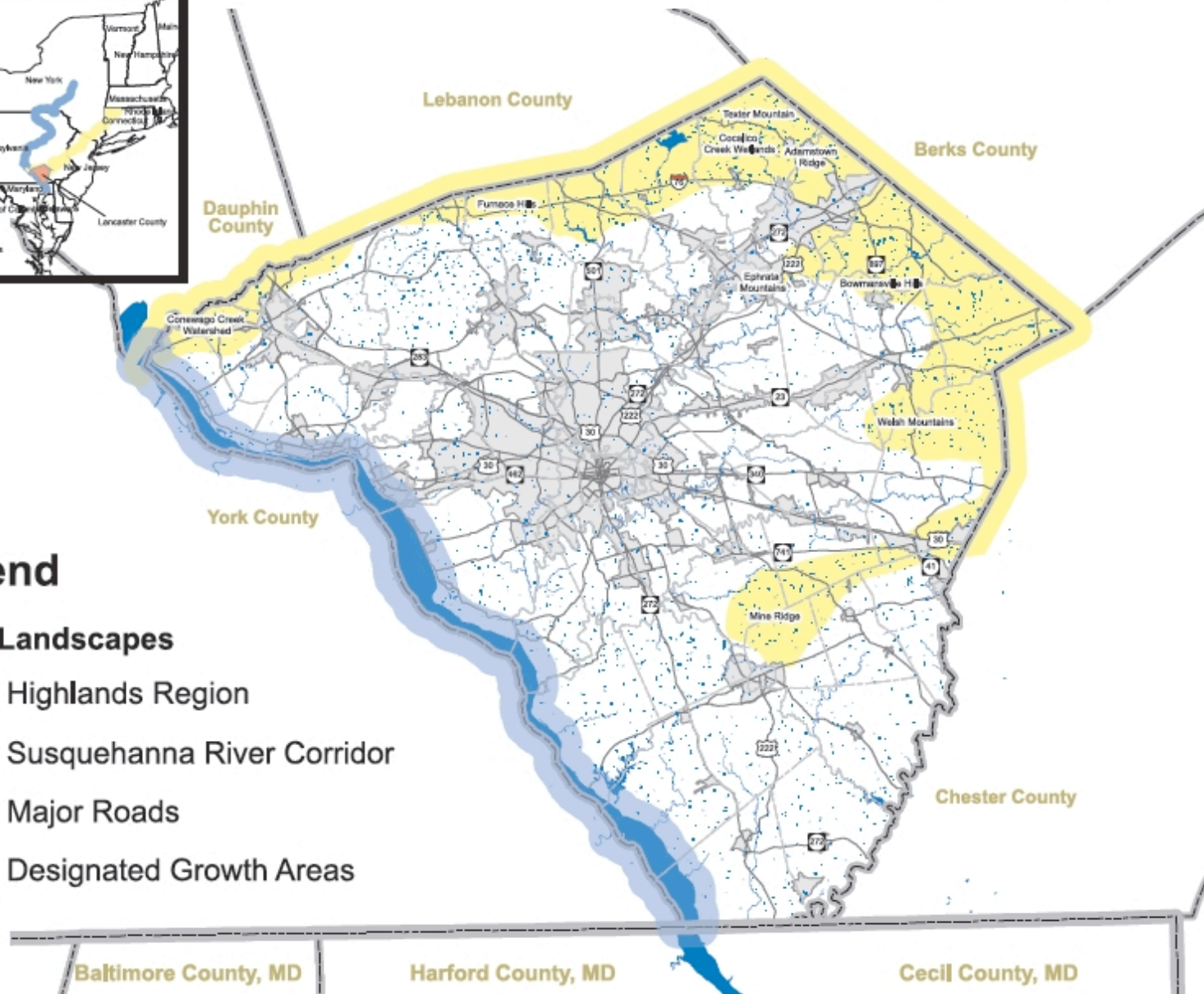
**Regional Map**



**Legend**

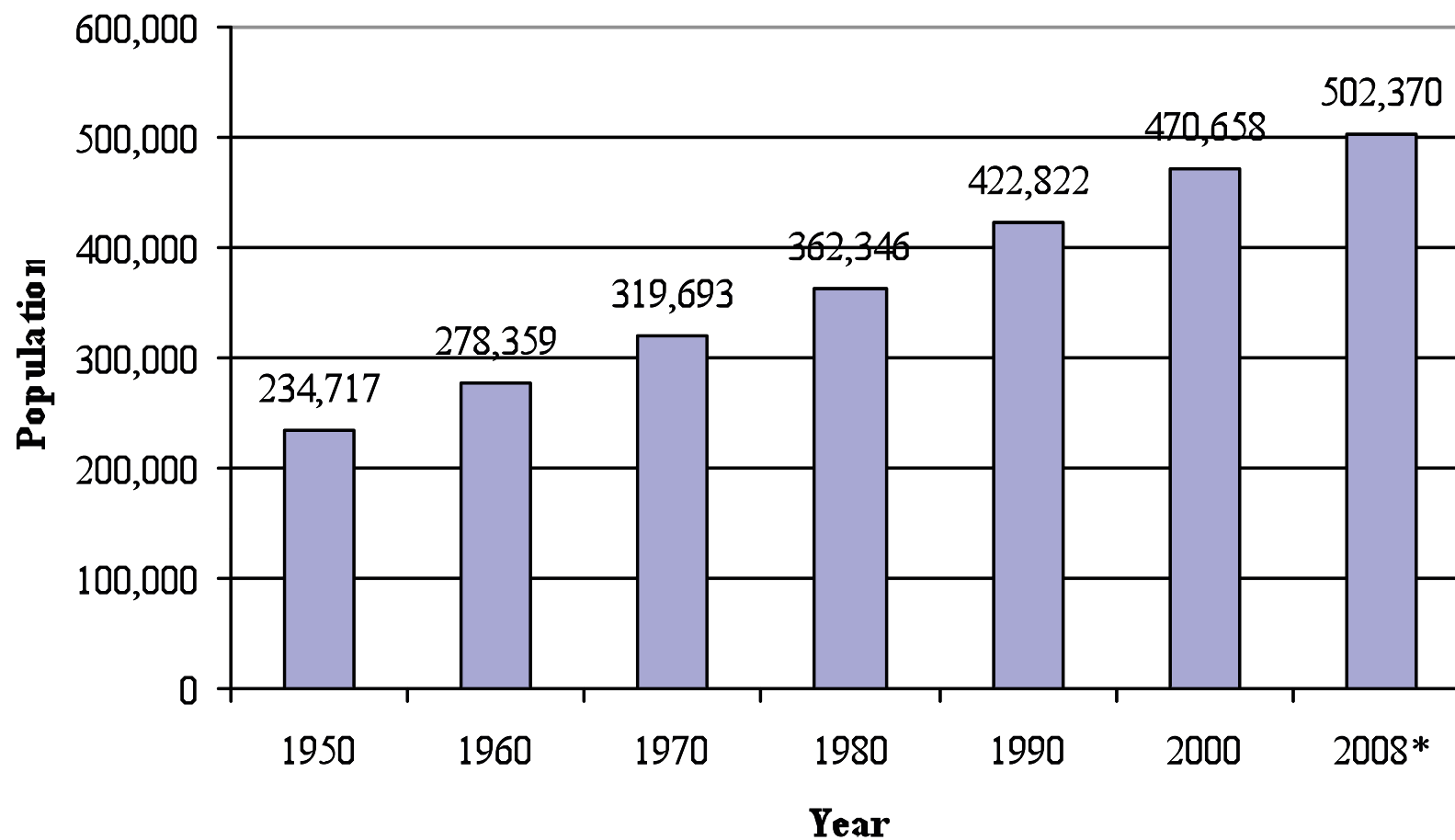
**Large Landscapes**

-  Highlands Region
-  Susquehanna River Corridor
-  Major Roads
-  Designated Growth Areas



# Lancaster County Population

1950-2008



Data from the US Decennial Census, years 1950-2000

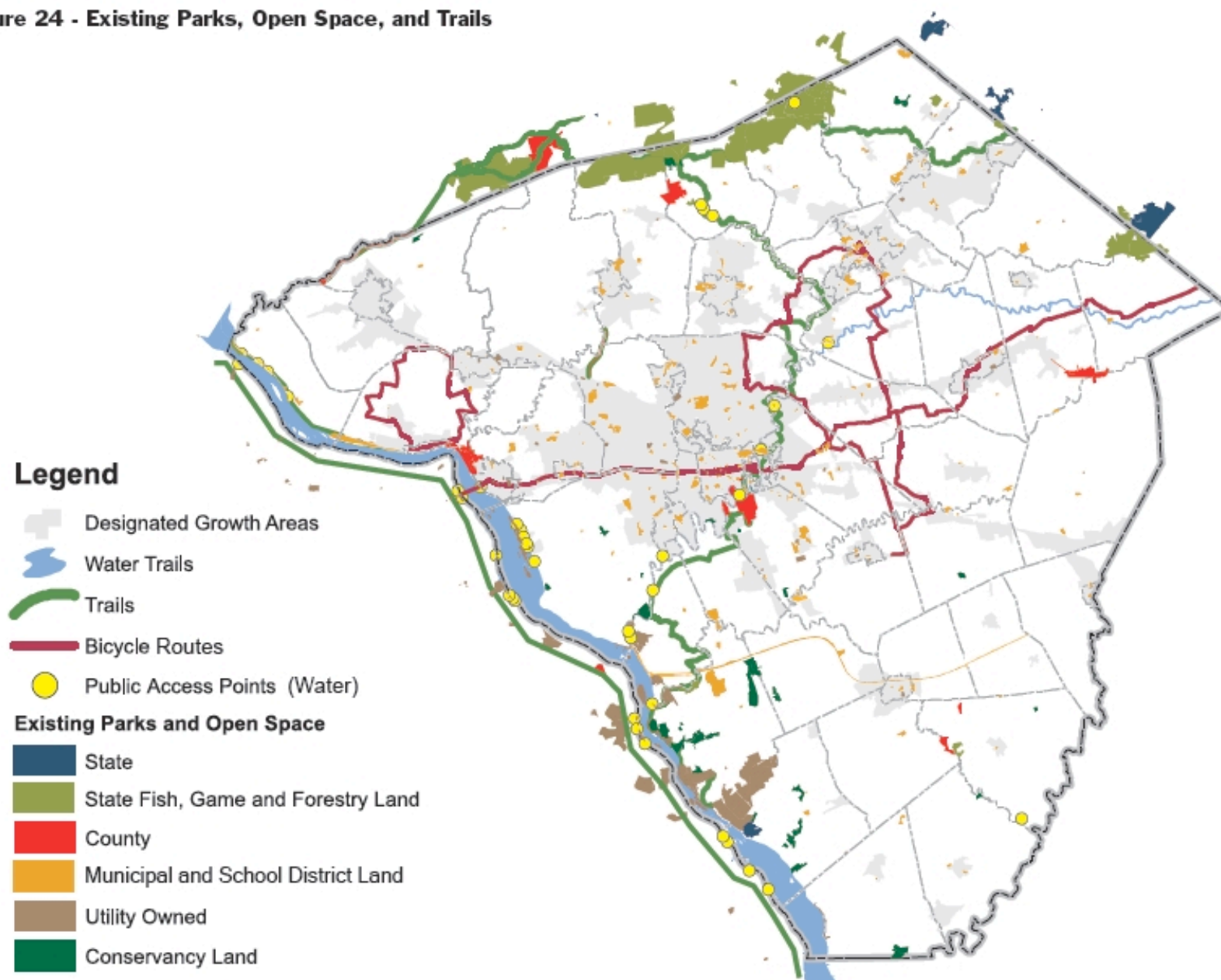
\*American Community Survey Population Estimate



**Figure 3 - Existing Land Use**

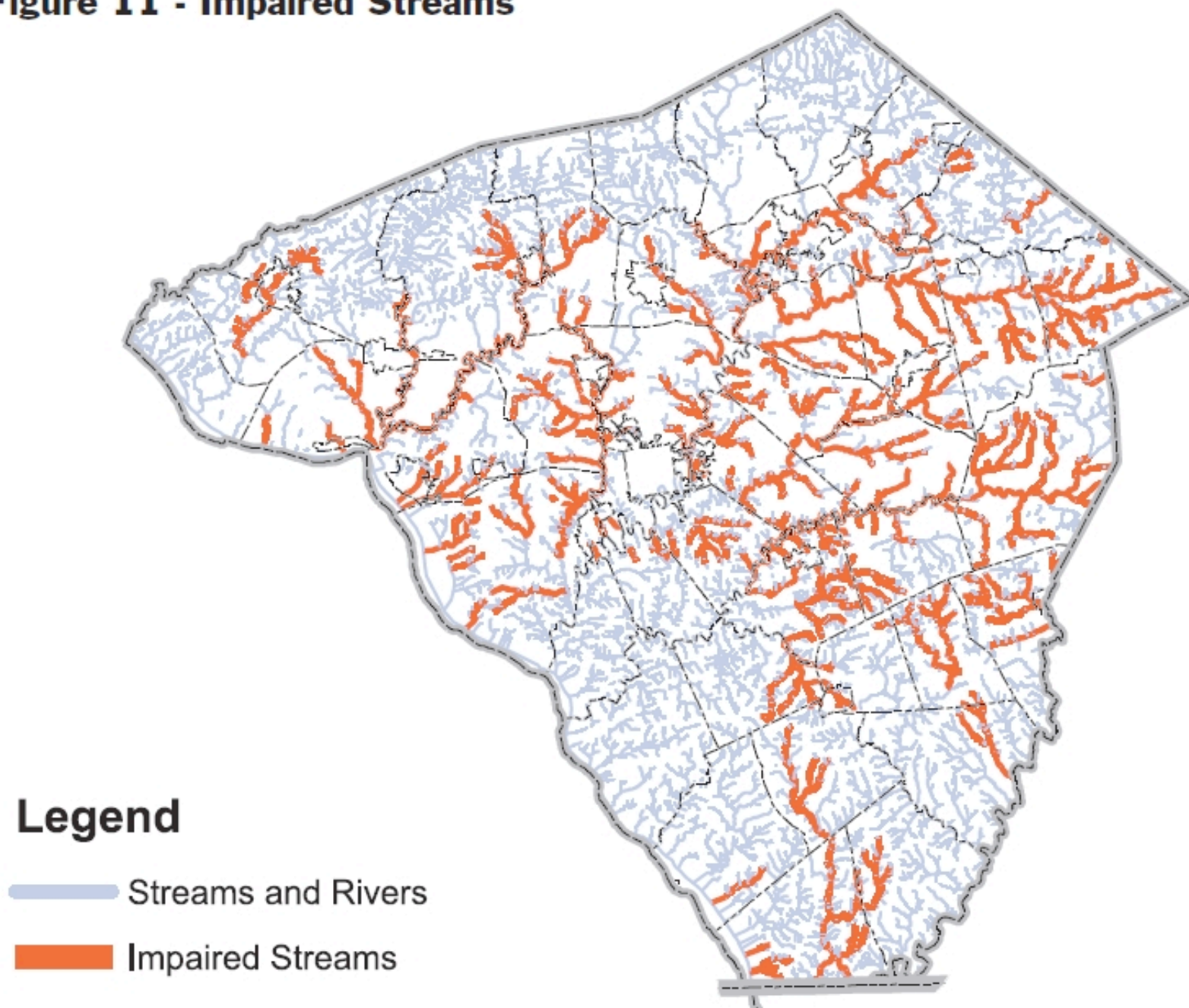


**Figure 24 - Existing Parks, Open Space, and Trails**





**Figure 11 - Impaired Streams**



# Poor Agricultural Practices





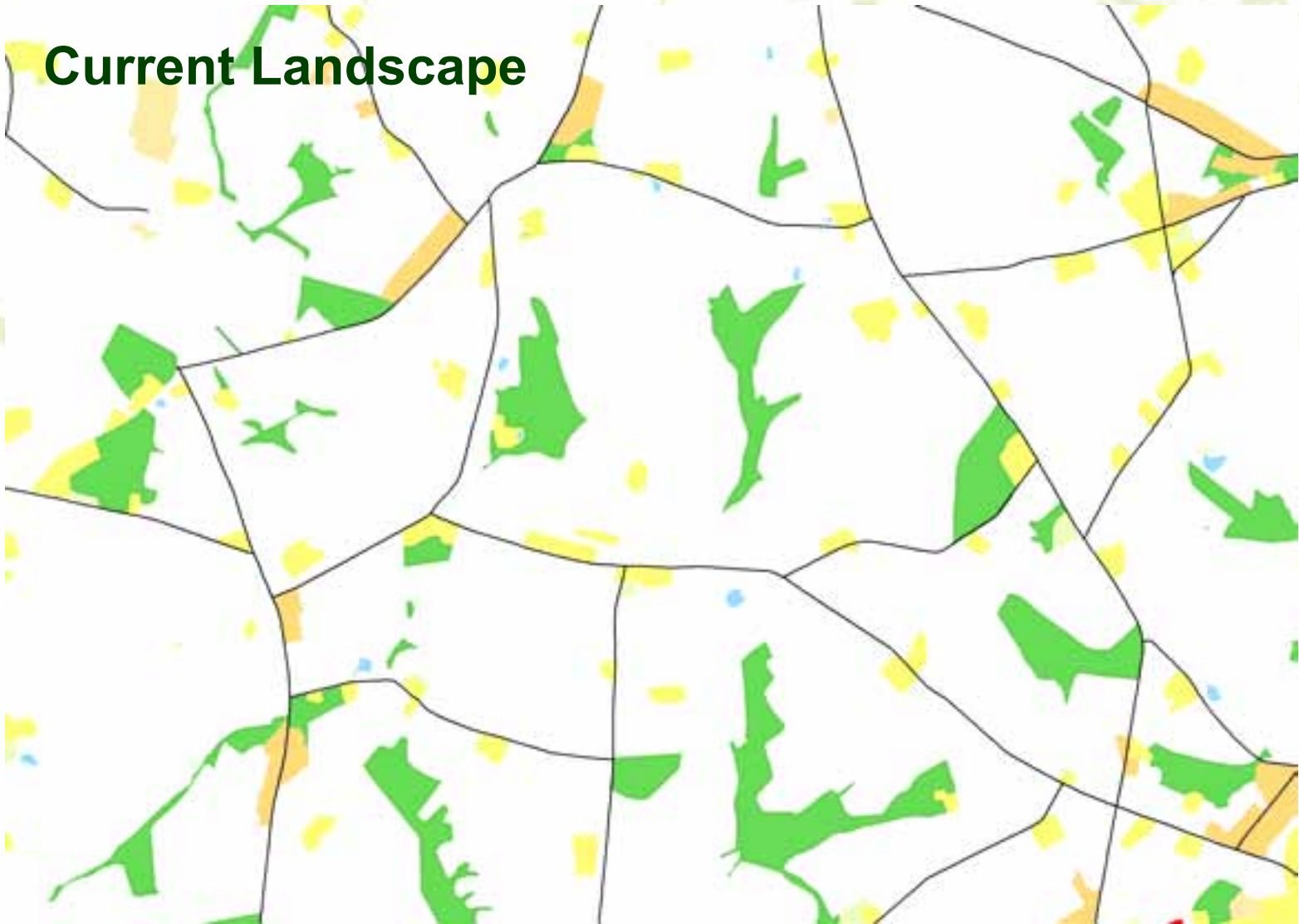
# Legacy Sediments



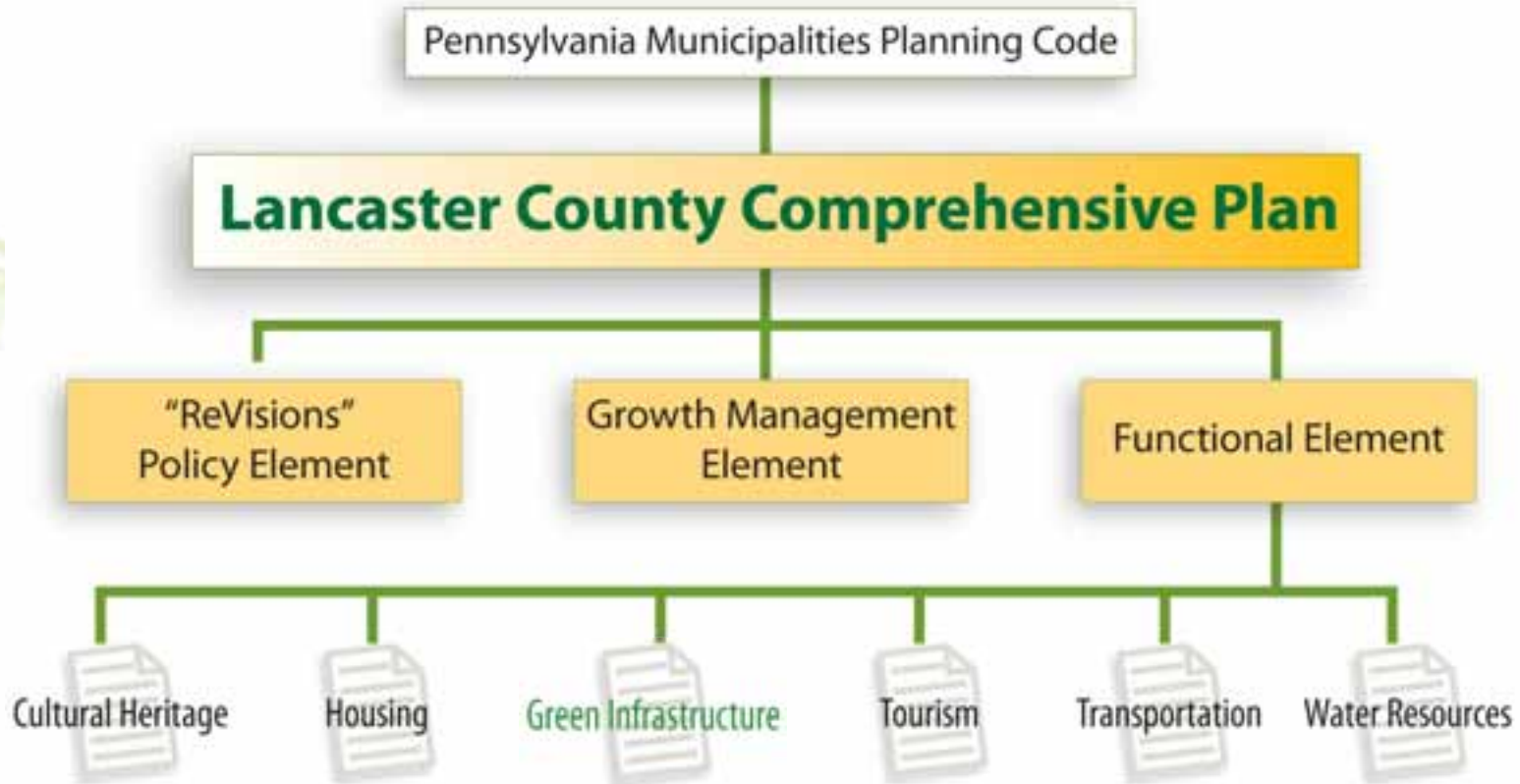


# Forest Fragmentation

**Current Landscape**

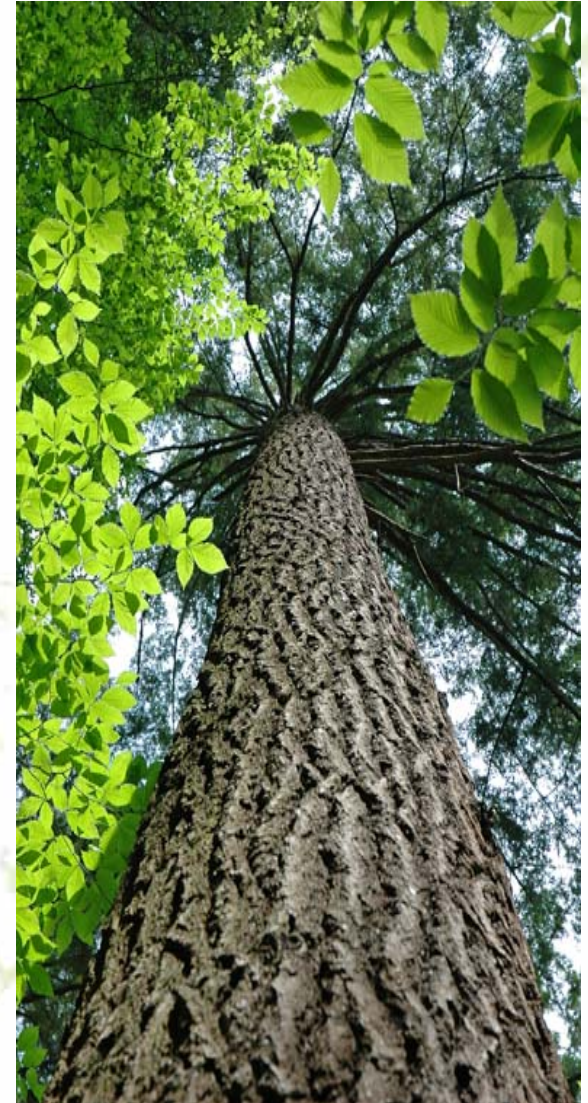


# Functional Elements of the Lancaster County Comprehensive Plan



# What is Green Infrastructure?

- Green Infrastructure is a network of **natural areas, green spaces, and greenways** in rural, suburban, and urban areas that sustains ecological functions and values and provides a broad array of benefits for the people of Lancaster County and the surrounding region:
  - **Environmental Quality**
  - **Community Health**
  - **A Sustainable Economy**





# Gray vs. Green Infrastructure

Green



**Gray Infrastructure**



**Green Infrastructure**

# Green Infrastructure Examples

## *Rural Areas*



**High Quality Waterways**



**Forest Land**



**Species of Concern Habitat**

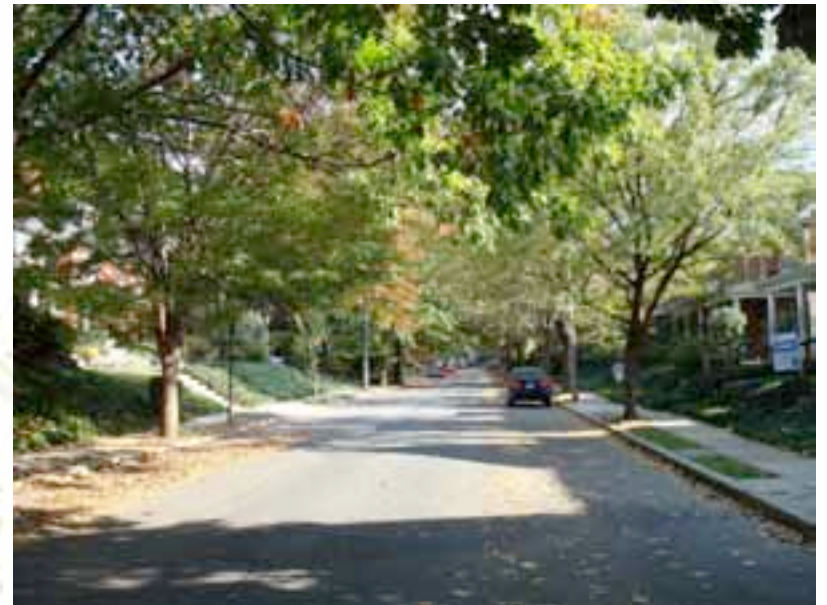


**Native Species**



# Benefits of Urban Greening

- Mitigate Heat Island Effect
- Reduce Stormwater Runoff
- Clean Water
- Reduce Flooding
- Increase Infiltration
- Reduced Energy Cost
- Clean Air
- Reduce Noise
- Beautification
- Support Native Species





# What is the Green Infrastructure Plan Intended to Achieve?

- Four Main Goals:
  - Preservation
  - Conservation
  - Restoration
  - Recreation





## Illustrating the four goals of the Greenscapes

Figure 26. Preservation Areas



## Preservation

Figure 28. Restoration Areas



## Restoration



## Conservation



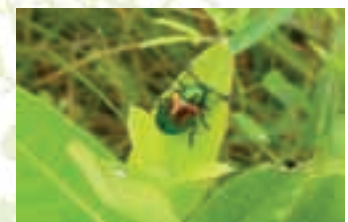
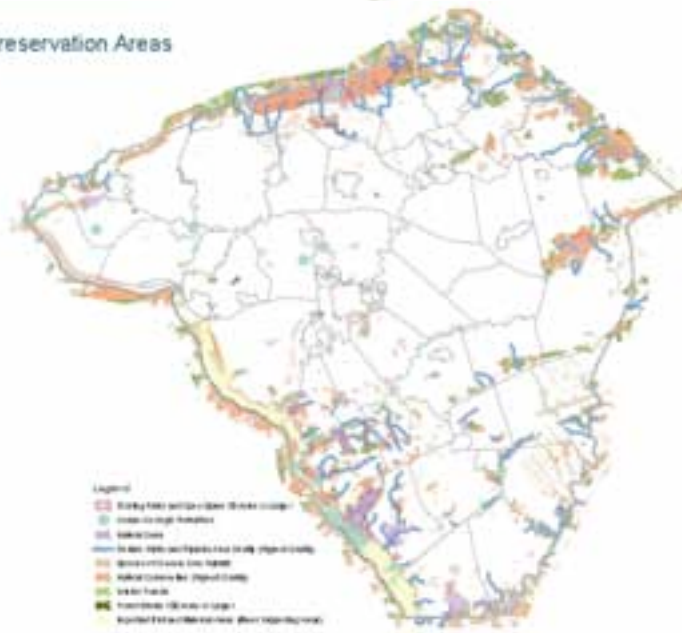
## Recreation



# What is the Green Infrastructure Plan Intended to Achieve?

- **Preservation**: Preserve Lancaster County's exceptional natural resources

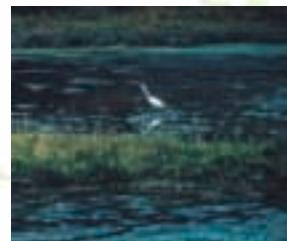
Figure 26: Preservation Areas





# What is the Green Infrastructure Plan Intended to Achieve?

- **Conservation**: Conserve natural resources and the ecological services they perform throughout Lancaster County



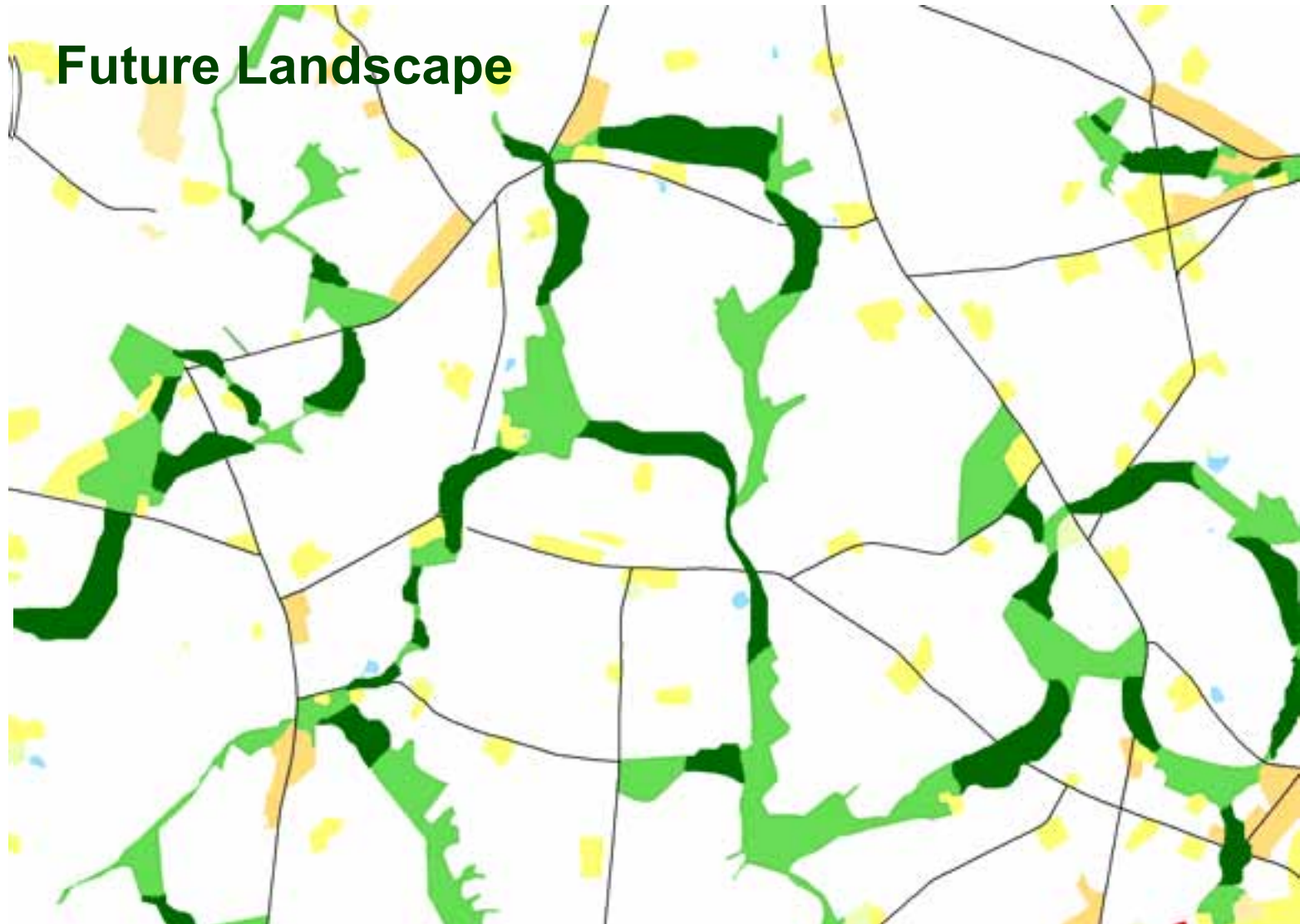
# What is the Green Infrastructure Plan Intended to Achieve?

- **Restoration**: Restore ecological connections and natural resources throughout Lancaster County

Figure 28: Restoration Areas



# Connecting Forest Patches

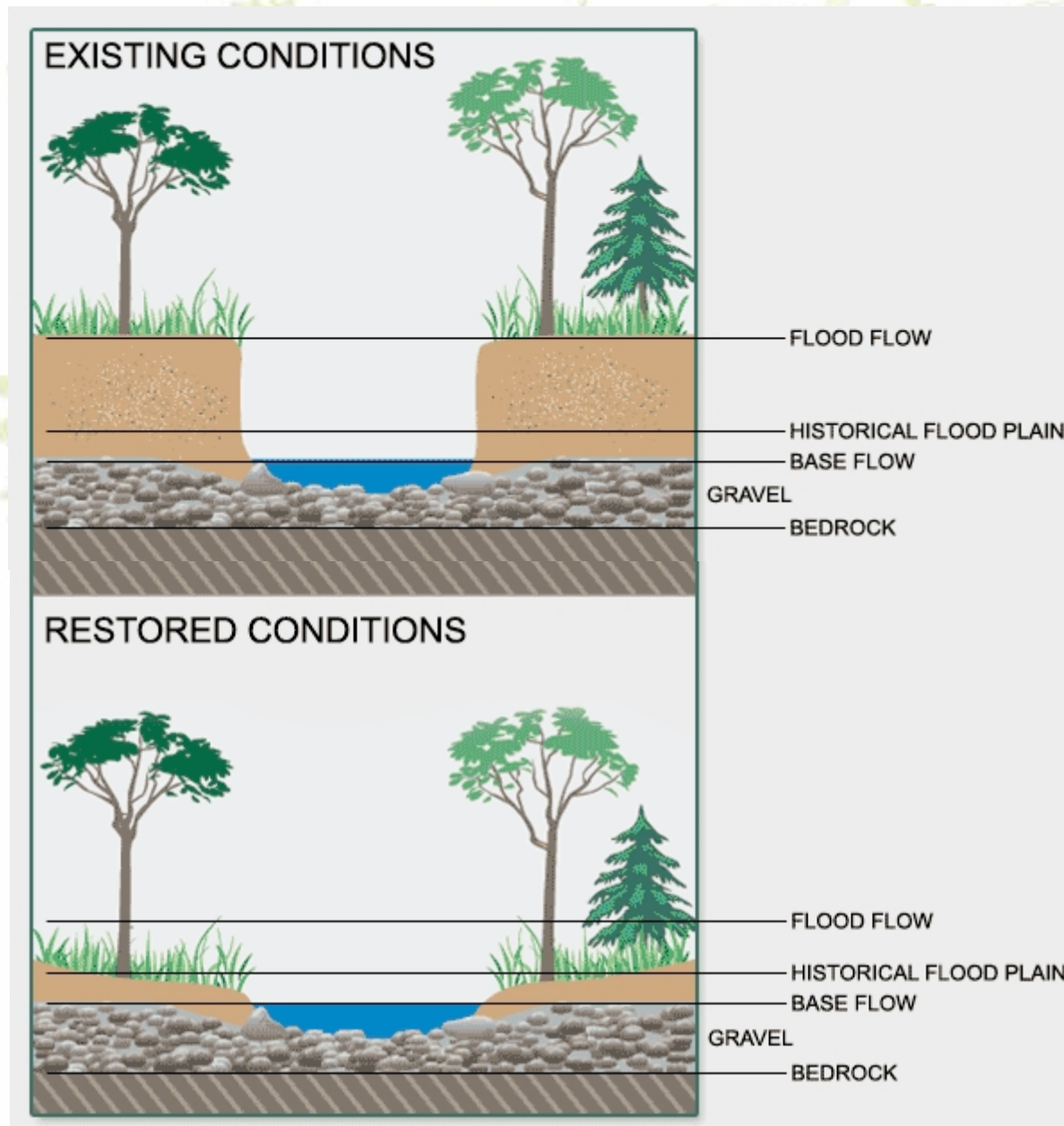




# Riparian Buffers



# Floodplain Restoration





# Green Infrastructure/Green Infrastructure Intervention Examples

## *Urban Areas*



**Shade Trees**



**Rain Gardens**



**Porous  
Pavement**



**Green Roofs**



**Rain Barrels**



**Tree Box Filters**

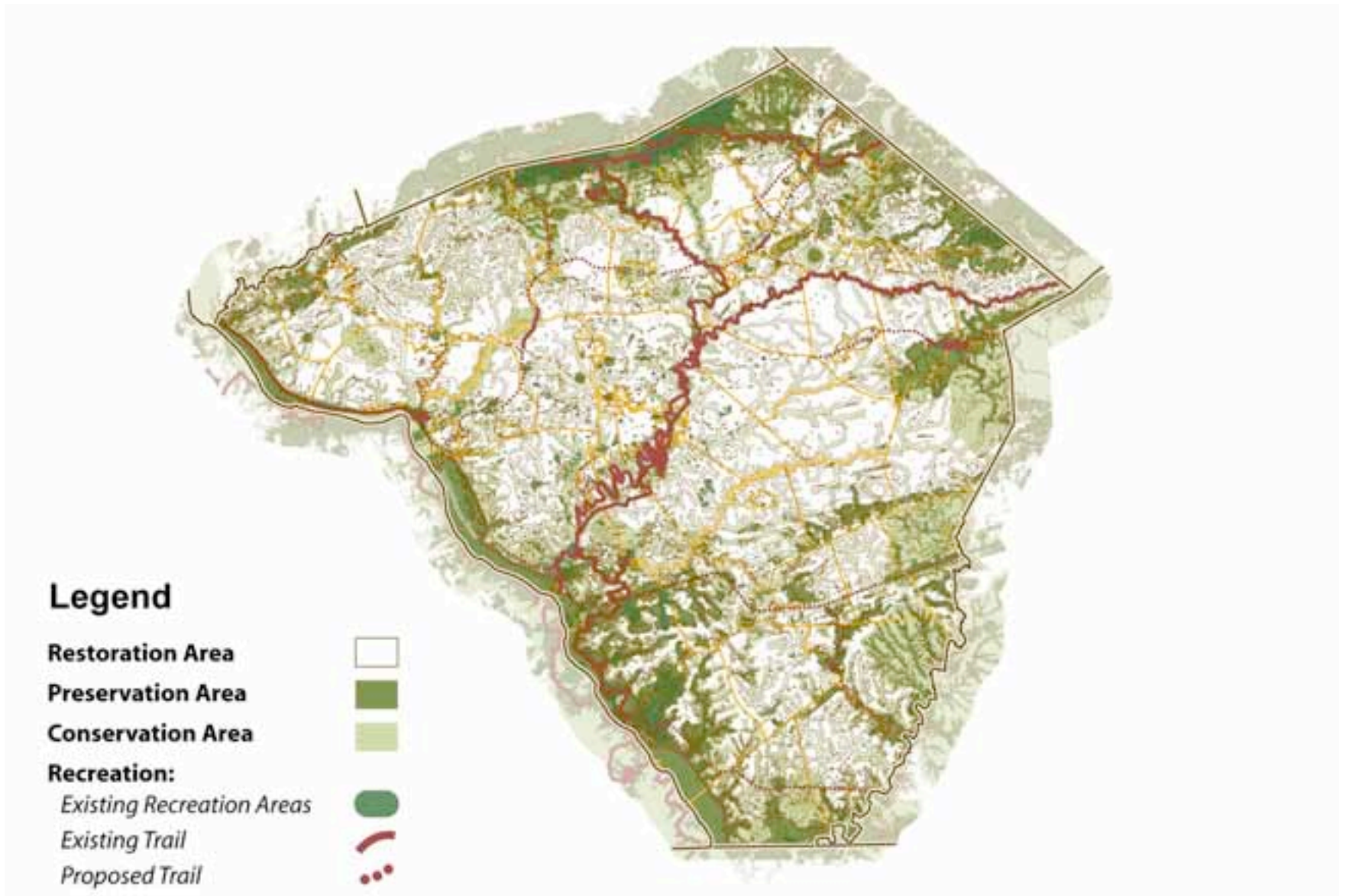
# What is the Green Infrastructure Plan Intended to Achieve?

- **Recreation**: Provide accessible outdoor recreation opportunities throughout Lancaster County





# Green Infrastructure Concept Map



# Green Infrastructure Tools

- Policy and Planning Tools
- Regulatory Tools
- Capital Investment Tools
- Outreach and Partnership Tools



**Cluster Development**



**Biofilters**



**Environmental Advisory Councils**



# Key Action Initiatives

- Green Infrastructure Website
- Green Infrastructure Events
- Municipal green infrastructure plans
- Green Infrastructure overlay zoning district
- County Green Infrastructure Funding Program
- Completion of the Countywide Regional Park and greenway trail system
- Green Infrastructure Summit
- Green Infrastructure Coalition
- Formation of Environmental Advisory Councils (EACs)

