

committed to ensuring continued access to the property and to ongoing exploration. We acquired the cave in October of 1998 and paid it off in January of 2001.

## Billy Clay Cave Preserve

Billy Clay Pit is located in Pocahontas County, West Virginia near the Snowshoe Ski Resort. Cartographer Walt Hamm and the Pittsburgh Grotto have surveyed over a mile of passage in this multi-drop vertical cave, which had been closed for many years. Its pristine formations are relatively untouched due to the cave's vertical entrance and the low visitation rate.



*Billy Clay Pit*

A paleontological study by Fred Grady of the Smithsonian Institution documented the bones of a now-extinct (in West Virginia) porcupine.

To allow access to this cave while protecting it, a permit system has been put into place. This also assures that visitors have the appropriate vertical



*Billy Clay Pit*



*View from the entrance of Billy Clay Pit*  
caving skills to safely visit Billy Clay Pit.

Another small cave, Clay Pit #2, is also on the property.

## MAKC Kiosks

The MAKC maintains three educational kiosks and displays containing safe caving and conservation information at our Hall Cave Preserve, at Bear Cave in Westmoreland County, Pa., and at Laurel Caverns, the show cave in Fayette County, Pa.

## Membership

Volunteers operate the Mid-Atlantic Karst Conservancy. We have no paid staff. Join us in this exciting endeavor.

## You can help

by becoming a member, making a donation, and by volunteering your time to help us with our conservation projects, such as cave cleanups. Fill out the membership form that is part of this brochure today. E-mail us at [info@karst.org](mailto:info@karst.org) to find out how to volunteer, or write to us at the address below.

- Complete the application on the other side.
- Include credit card information or enclose a check payable to:

**Mid-Atlantic Karst Conservancy, Inc.**  
**P.O. Box 196, Murrysville, PA 15668**

**MID-ATLANTIC**  
**KARST CONSERVANCY**

**Preserving the Caves of Today  
for the Cavers of Tomorrow**

A photograph of a large, white, textured cave formation, possibly a stalactite or flowstone, illuminated by a light source. Two people are visible in the background, standing near the base of the formation.

<http://www.karst.org>

**Dedicated to the study,  
exploration, conservation and  
preservation of caves and  
karst resources in the  
Mid-Atlantic Region**



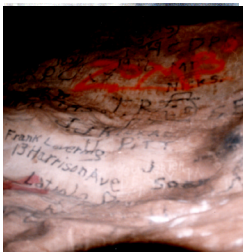


## Caves are special places

Some caves harbor important archaeological and paleontological resources. Many are important for hydrological reasons -- that is, they are part of our natural groundwater conduits, their streams resurging as springs in our mountain hillsides. Some caves are home to bats and woodrats, important native species which play an integral role in our eco-system. Some caves have delicate formations which grow only a few inches every thousand years or so. Just as humans have had an impact on our wetlands, our air quality, and our water quality, they



have also had an impact on our caves. Sinkholes filled with trash carry pollution into our groundwater. Spray paint graffiti despoils scenic rock faces. Stubs of once-gorgeous and pristine formations are all that remain in some caves.



## The Mid-Atlantic Karst Conservancy

was formed in 1997 to:

- Preserve these works of nature for conservation, sci-

entific study and recreational caving.

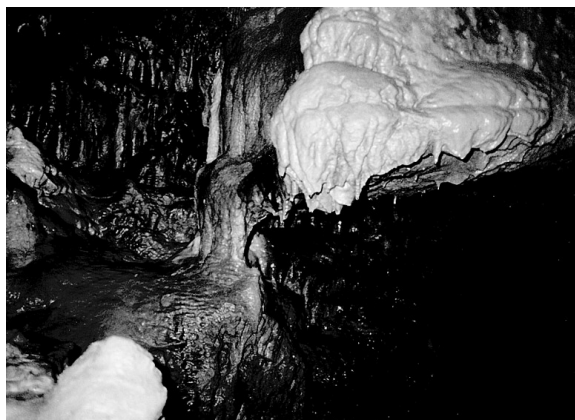
- Educate landowners, cavers and the general public about the importance of caves and karst resources (karst is an area of irregular limestone in which erosion has produced fissures, sinkholes, underground streams, and caverns.)
- Acquire and manage caves and karst areas.



*Hall Cave Entrance*

## Hall Cave Preserve

We own 380 foot long Hall Cave in Huntingdon County, Pennsylvania and 9.45 acres of very karsty ground surrounding it. Hall Cave has been extensively used for recreational and educational activities. There are strong possibilities for finding additional cave on the property. The MAKC is



*Hall Cave Formations*

## Membership Application

- ☐ New Member ☐ Renewal

Name \_\_\_\_\_

Address \_\_\_\_\_

City \_\_\_\_\_ State \_\_\_\_\_ Zip \_\_\_\_\_

Home phone \_\_\_\_\_

Work phone \_\_\_\_\_



E-mail address \_\_\_\_\_

Caving Affiliations \_\_\_\_\_

Select an annual membership level. All include a subscription to the quarterly MAKC newsletter, Karst Chronicle.

- ☐ Regular \$10  
☐ Donor \$50  
☐ Contributing \$100  
☐ Sustaining \$ \_\_\_\_\_ a month on my credit card for  
☐ one year  
☐ until I notify you

Credit Card Number \_\_\_\_\_

- ☐ VISA  ☐ MasterCard 

Expiration Date \_\_\_\_\_

I want to help sponsor the Billy Clay Cave Preserve (maps of available parcels sent on request)

- ☐ \$10 foot sections of the cave at \$40 each  
☐ Surface parcels at \$50 each

The Mid-Atlantic Karst Conservancy is a non-profit 501 (c) 3 corporation chartered in the Commonwealth of Pennsylvania.