

Western Pennsylvania Conservancy



WPC's Community Forestry Models at Work:
Increasing Tree Canopy through Community
Engagement

April 10, 2021

TreeVitalize Pittsburgh



34,000 Trees and Growing

A partnership to restore tree cover
in the Pittsburgh region

TreeVitalize Partnership

- The PA Department of Conservation and Natural Resources launched the program in **2004 in Philadelphia**
- **TreeVitalize Pittsburgh** established in **2008**



Western Pennsylvania
Conservancy







Fall 2014
Municipality:

APPLICATION for TREES Allegheny County – Fall 2014

Before completing this application:

1. Contact Jeffrey Bergman, TreeVitalize Director, to discuss your proposed project. 412-586-2396 or jbergman@paconserve.org
2. Conduct a site visit and assessment of your proposed tree planting location with Mark Hockley, TreeVitalize Forester, who will help evaluate your site. 412-586-2323 or mhockley@paconserve.org
1. Sign up for Tree Tender training with Tree Pittsburgh (<http://treepittsburgh.org/become-tree-tender>). Call 412-362-6360 or email education@treepittsburgh.org.

**

Allegheny County municipalities must have an established shade tree ordinance and shade tree committee/commission in order to apply to TreeVitalize Pittsburgh for trees.

Send five (5) print copies of the completed application, along with the tree request forms and municipal authorization to plant on public property, by 4 pm Friday, March 14th, 2014 to:

Jeffrey Bergman, TreeVitalize Director
Western Pennsylvania Conservancy
800 Waterfront Drive
Pittsburgh, PA 15222

Applications received after 4 pm on Friday, March 14th, 2014 will not be eligible for the fall 2014 planting season. Please answer every question thoroughly. If a question does not apply to your project, please write N/A on the application.

Application check list, have you:

- ☐ Discussed your project with the TreeVitalize Director
- ☐ Conducted a site visit with the TreeVitalize Forester
- ☐ Collected tree request forms and obtained a municipal authorization letter
- ☐ Signed up for Tree Tenders with Tree Pittsburgh
- ☐ Provided signed copy of municipal tree ordinance and shade tree commission information
- ☐ Provided municipal forestry budget including funds for removal/pruning/planting
- ☐ Provided a map of your proposed planting areas

Fall 2014
Municipality:



Application, along with the tree request forms, to be submitted to the public property

ER prior to application deadline)

Tree Tender graduate? Yes <input type="checkbox"/>
No <input type="checkbox"/>

ity residents, partner organizations

Tree Tender graduate? Yes <input type="checkbox"/>
No <input type="checkbox"/>

Tree Tender graduate? Yes <input type="checkbox"/>
No <input type="checkbox"/>

can forestry and arboriculture or
☐ Yes ☐ No

ty USA"? Yes ☐ No ☐

ore? Yes ☐ No ☐

p has sponsored:

<input type="checkbox"/> Container	<input type="checkbox"/> Bare root
<input type="checkbox"/> tractor	<input type="checkbox"/>

Fall 2014
Municipality:

rees planted:
wo years:

level?
r 10-25 trees.
planting event of >25 trees;

ting events; eligible for 50-100

es (pruning, planting, or tree
on by DPW staff or Shade

stewardship activities you

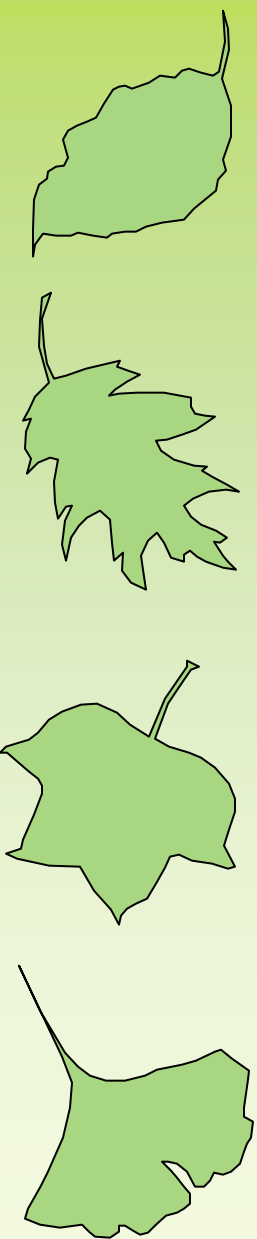
ect (Municipal Park, business

th a TreeVitalize

f trees requested. These can
sses. (Minimum of 10 trees, first
s or 100 restoration trees)

Application FAQs

- What if I don't have any urban forestry or **tree planting experience**?
 - That is perfectly fine
- Do I have to **have a site visit**?
 - YES
- **How many trees** can I apply for?
 - Minimum of 10, Maximum 25 landscape trees or 100 restoration trees
- What if there aren't any **improvement projects** or activities in my community?
 - That's ok, could include garbage pick up, food drives, etc.





Application FAQs

MUNICIPAL ONLY

- What if we don't have a **tree ordinance** or Shade Tree Commission/Committee?
 - We can help you identify resources to work towards these goals if needed/provide sample ordinances
- Why do you need our **forestry budget**?
 - To determine how much you are currently investing in your forestry program
- Why do you ask about **municipal staff involvement**?
 - Some municipalities offer to have DPW assistance to prepare planting holes, to help move and plant trees, or to operate heavy machinery at the plantings.

















Troy Hill
Before (2009)



Troy Hill
After (2019)



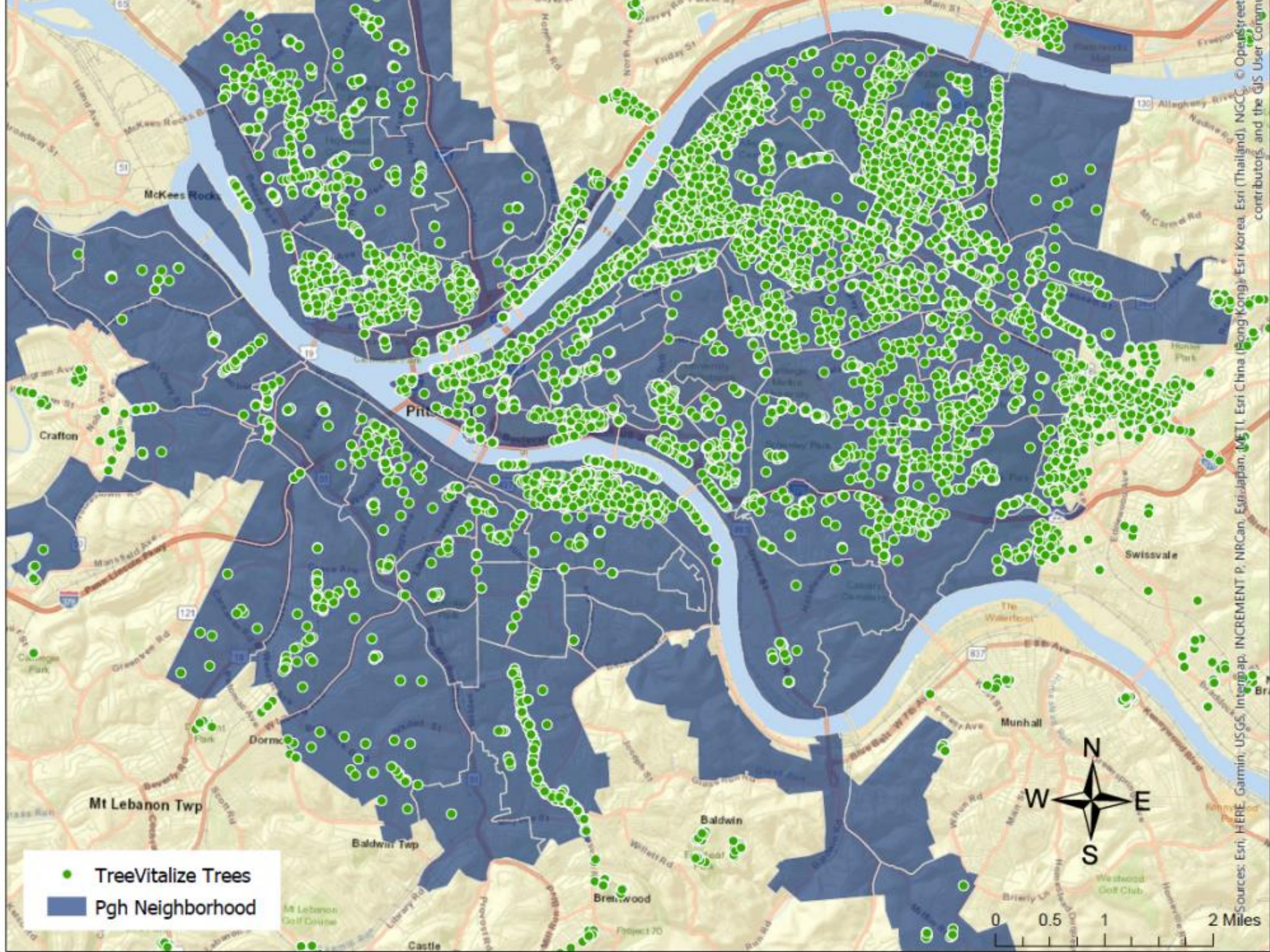


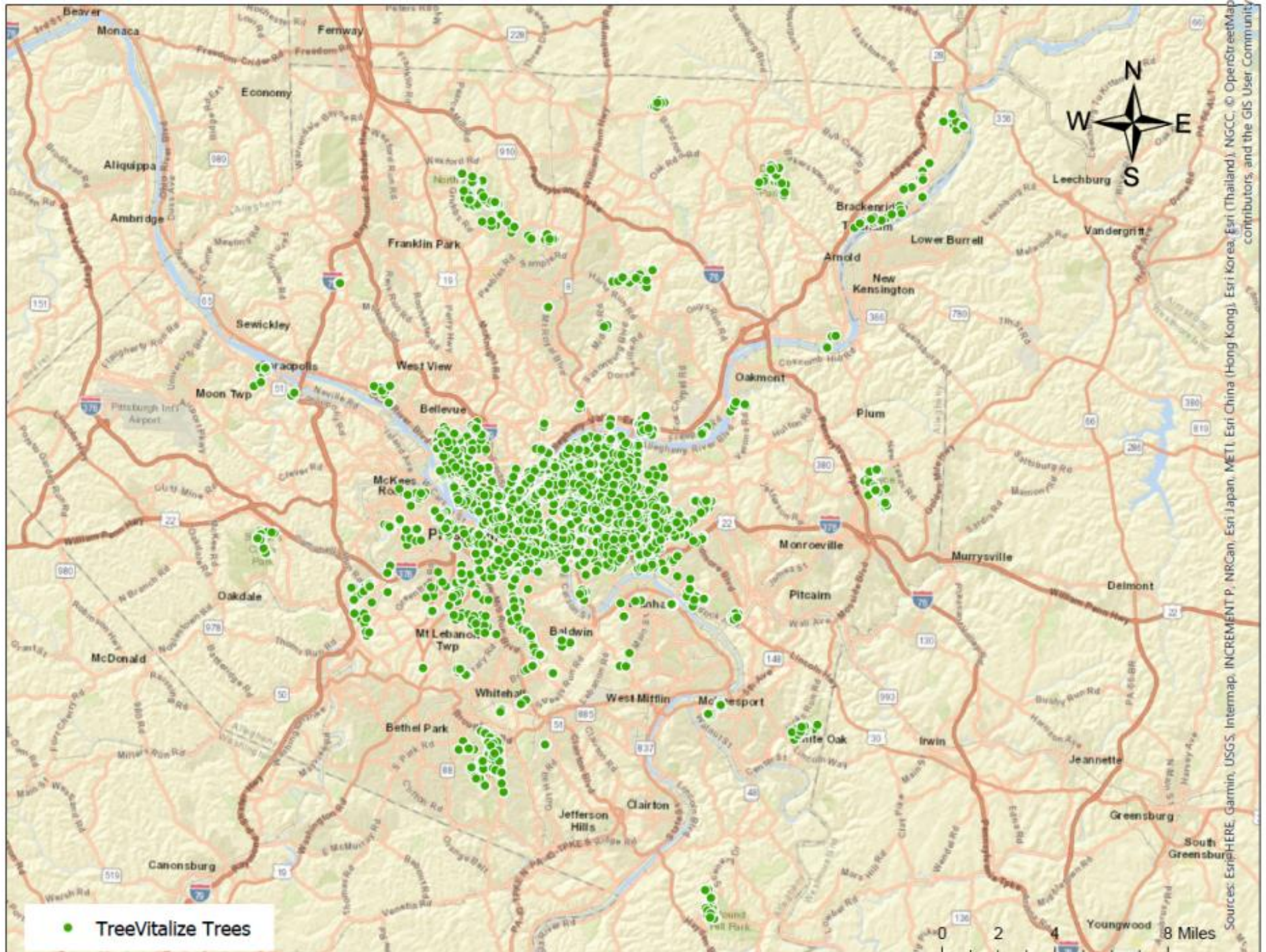


Troy Hill
Before (2009)



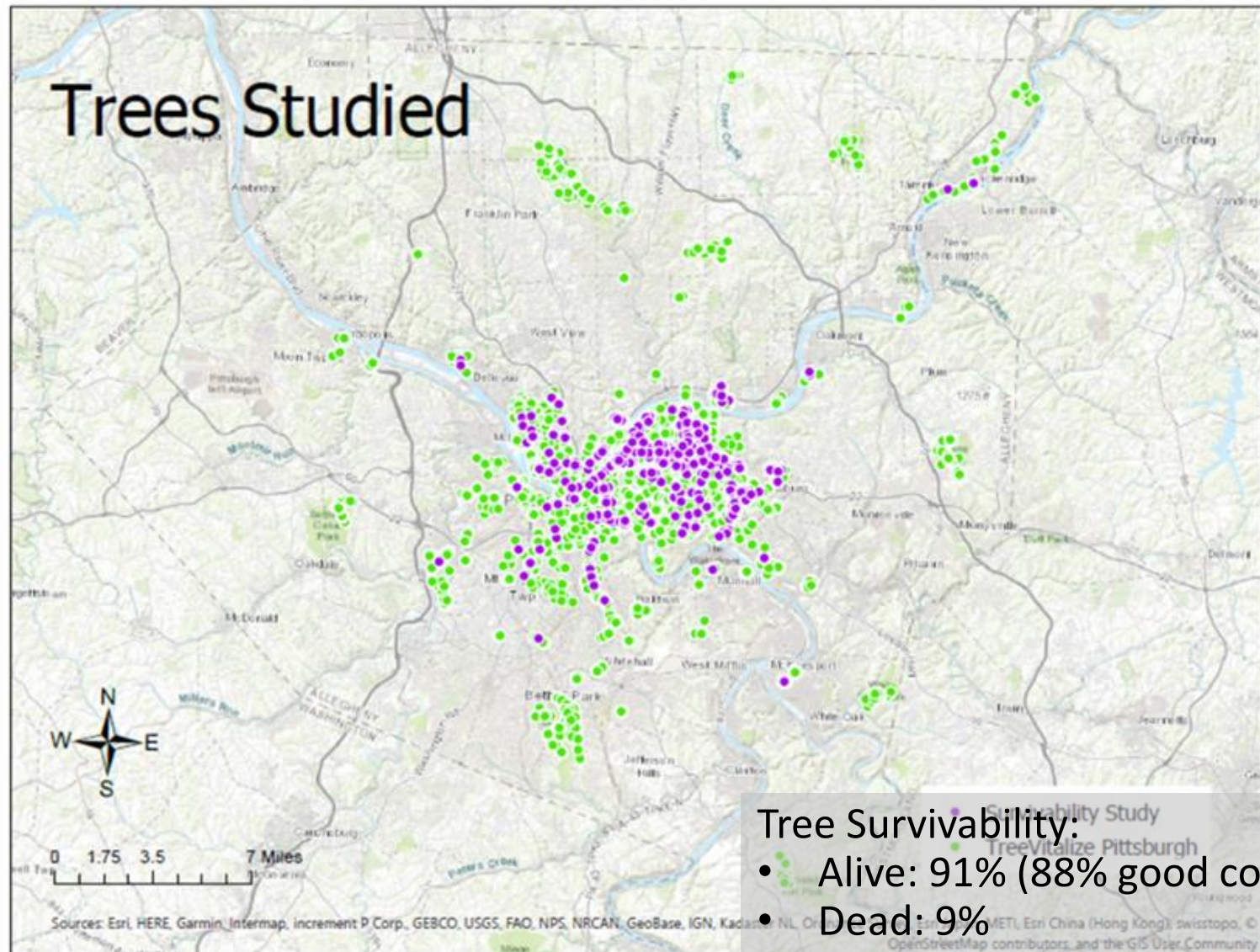
Troy Hill
After (2019)





TreeVitalize Pittsburgh Tree Health Study 2018

Evaluated 375 TreeVitalize Pittsburgh Street Trees
Random Sample of City of Pittsburgh and Allegheny County Locations



Western Pennsylvania Conservancy



Thank you

Jeff Bergman

jbergman@paconserve.org

(412) 586-2396