

Transportation and Community Funding Programs

Navigating Federal and State Transportation Funding Opportunities

Transportation and Community Funding Programs

- The Southwestern Pennsylvania Commission (SPC) serves the 10-county Pittsburgh region as the official Metropolitan Planning Organization, Local Development District, and Economic Development District.
- SPC is committed to assisting our local governments and agencies in the preparation, planning, and execution of their community's priority projects and investments.
- Our goal is to provide local project sponsors a guide to available resources that can assist with the implementation of a community's shared goals.

Local Transportation and Community Funding Programs and Project Examples



Funding Programs

- Programs relating to Healthy Communities and Air Quality Improvement
 - Transportation Alternatives Set-Aside Program (Federal)
 - PennDOT Multimodal Program (State)
 - DCED Multimodal Program (State)
 - DCED Greenways, Trails, and Recreation Program (State)
 - SPC Congestion Mitigation Air Quality Improvement Program (Federal)

For a comprehensive list of funding programs and dates please visit
<https://www.spcregion.org/funding-programs/>

Transportation Alternatives Set-Aside Program (TASA)

SPC & PennDOT Administered
Federal Funding

Type: Reimbursement

Match: There is no match requirement; however, local sponsors pay all costs for pre-construction activities (design, environmental clearance, right of way, utilities, etc.) and PennDOT provides 100% cost reimbursement for the construction phase (including construction inspection).

Available Funding: \$1.8 million/year, region-wide, and \$18 million/year statewide. Projects selected by competitive application process every 2 years

Other: Must be consistent regional long range transportation plan.

Eligible Applicants: See handout



Transportation Alternatives Set-Aside Program (TASA)

SPC & PennDOT Administered
Federal Funding

Eligible Uses:

- Bicycle and Pedestrian Facilities
- Safe Routes for Non-Drivers
- Conversion of Abandoned Railway Corridors to Trails
- Historic Preservation of Transportation Facilities
- Construction of Turn-Outs, Overlooks and Viewing Areas
- Outdoor Advertising Management
- Environmental Mitigation (incl. Stormwater &Vegetation Management)



TASA Program Application Dates

- **PennDOT TA Program**

- Last projects were awarded in 2018. The next application period of the PennDOT TA program is anticipated to occur in Fall 2021.
- More information can be found at:
<https://www.penndot.gov/ProjectAndPrograms/Planning/Pages/default.aspx>

- **SPC Regional TA Program**

- Last round of projects were selected in December 2019, the next application period is anticipated to occur in Fall 2021

PennDOT Multimodal Transportation Fund

PennDOT Administered State Funding

Type: Reimbursement: on a monthly basis, based on invoices

Match: 30% of requested amount

- Other state or federal agency grant can not be used as match

Available Funding: \$77 million/year, state-wide. Projects selected by competitive application process, applications closed on November 6th, 2020. Next round anticipated in Fall 2021.

Other: Project cost of \$100,000 or more; grants normally will not exceed \$3,000,000.

More information can be found at:

<https://www.penndot.gov/ProjectAndPrograms/MultimodalProgram/Pages/default.aspx>

PennDOT Multimodal Transportation Fund

PennDOT Administered State Funding

Eligible Uses:

- Projects which coordinate local land use with transportation assets to enhance existing communities
- Streetscapes, lighting, and pedestrian safety
- Projects improving connectivity or the utilization of existing transportation assets
- Projects related to the development of transit-oriented development

Department of Community and Economic Development (DCED) Multimodal Transportation Fund

State Funding administered by the Commonwealth Financing Authority (CFA)

Type: Reimbursement - DCED will release funds to the applicant at 30-day intervals

Match: 30% of requested amount; (cash contributions or equivalents for the appraised value of the real estate necessary to construct project)

Eligibility/Availability:

- Last round closed in September 2020 (deadline was extended). Next round anticipated to open on March 1st, 2021.
- Local Government, COG, Business, Economic Development Organization, Public Transit Agency, Port Owners

Other: Projects must have a total cost of \$100,000; generally requests do not exceed \$3,000,000.

DCED Greenways, Trails and Recreation Program

State Funding Administered by the CFA as part of Act 13

Type: Reimbursement - DCED will release funds to the applicant at 30-day intervals

Match: 15% Local; cash match of the total project cost or cash equivalents for the appraised value of real estate

Available Funding: Applications anticipated to be accepted between February 1, 2021 and May 31, 2021. Grants do not exceed \$250,000.

SPC Congestion Mitigation Air Quality Improvement Program (CMAQ)

SPC & PennDOT Administered Federal Funding

Type: Reimbursement

Match: 20% Non-Federal of total project cost (per phase)

Application Period: Next application period anticipated for Fall 2021.

Eligible Applicants: Any qualified government entity, including local governments, regional transit agencies, port authorities, and state agencies. Non-profits and private sector entities may partner with an eligible applicant to apply.

Other: Projects must demonstrate that they will contribute to attainment or maintenance of the national ambient air quality standards for ozone, carbon monoxide, and particulate matter. For more information see funding guidance handout.

Homewood Pedestrian, Student, & Transit Connectivity Project

SPC TAP Approval Amount: \$500,000

DOT TAP Approval Amount : \$498,793

Sponsor: URA

The project builds upon community priorities and the URA's Homewood TOD Study of 2015, which examined possible infrastructure improvements to initiate Transit Oriented Development in the neighborhood. The project improves existing, & creates new multi-modal connections and facilities near the E. Busway Homewood station, Faison elementary school, and regional employment & education centers; improving safety and accessibility.



Before



During Construction



After

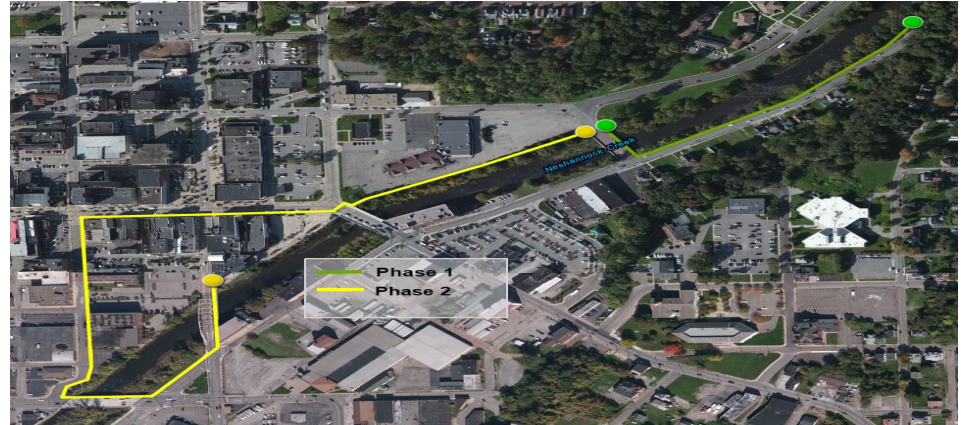
New Castle Multimodal Regional Riverwalk Project (Phase II)

TAP Approval Amount: \$792,470

DCNR Approval Amount: \$462,000

Project Cost: \$1,282,410

Sponsor: City of New Castle



The overall project will replace deteriorated infrastructure to create a pedestrian and bicycle friendly environment that is well connected to existing infrastructure and new access points, resulting in a more walkable and livable regions, while promoting tourism and economic development

Wharton Street Bicycle and Pedestrian Path Project

TAP Approval Amount: \$869,000

Project Cost: \$994,000

Sponsor: City of Pittsburgh

The project is an east-west bicycle and pedestrian route that includes building a path/ramp under the Birmingham Bridge at Wharton Street in the City of Pittsburgh, Allegheny County, PA. In order to light this path, Cobra head light fixtures were mounted to the steel beams of the bridge.



Etna Riverfront Park & Trail Project

TAP Approval Amount: \$400,000

DOT TAP Amount: \$383,000

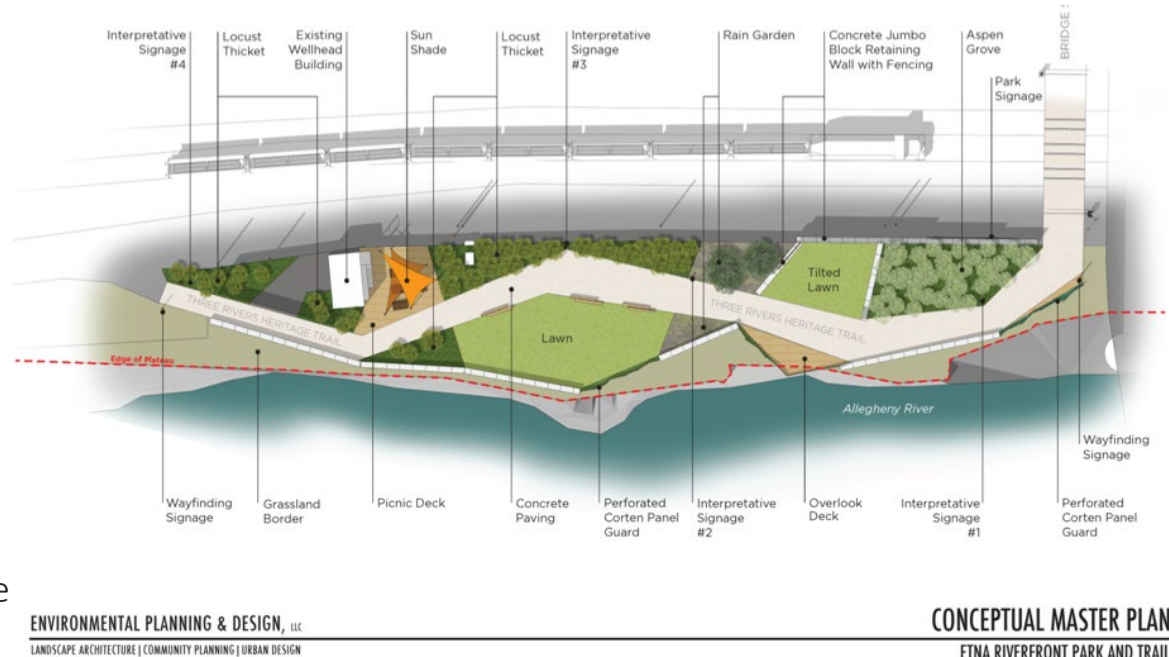
Total Project Cost: \$1,330,000

Other Funds: MTF, GTRP, others

Sponsor: Borough of Etna

A key component to the connections needed for the further development of the Three Rivers Heritage Trail, part of the proposed Erie to Pittsburgh Trail and the Harrisburg to Pittsburgh Mainline Canal

Greenway. The project will construct a riverfront park, trail, and trail access point on a former Brownfield site owned by the Borough of Etna, located upstream of Sharpsburg Borough and downstream of Shaler Township.



Local Involvement on Projects

Steps, resources, and best practices for successful project delivery



Local Involvement on TIP Projects

Locally Administered Projects

- Coordinate with SPC, PennDOT, and County Planning
- Apply for Funds (project specific)
- Assume project administration responsibilities
- Select Consultant
- Execute Agreements (Reimbursement Agreement, Engineering Agreement)
- Follow state & federal guidelines
 - Preliminary Engineering, Environmental Clearance, Final Design, Right of Way/Utilities/Permits, Construction

PennDOT Connects

- PennDOT or county project in your community is slated to be programmed on TIP
- Attend PennDOT Connects and scoping meetings
- Discuss local plans and priorities in project location
- Discuss desired project elements
- Discuss local match (project specific)
- Maintenance Agreements (project specific)

Get Educated

- PennDOT's Local Project Delivery Manual
 - Overview of required processes for delivering local projects using federal / or state funding administered through PennDOT
 - Prepared by PennDOT in coordination with FHWA



PennDOT Publication 740

- Local Project Delivery Website: www.penndot.gov/Doing-Business/LocalGovernment/Pages/Local-Project-Delivery.aspx

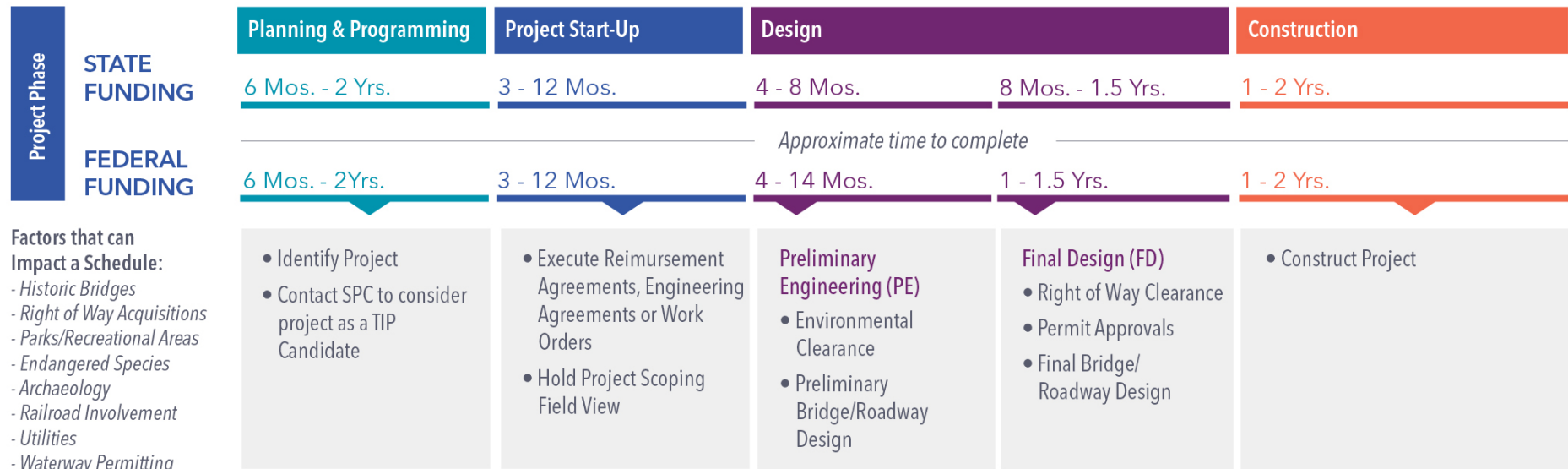
Get Educated

- Early Community Collaboration
- Ensures a Holistic Process
- Opportunity to be innovative when thinking about solutions
- www.penndot.gov/ProjectAndPrograms/Planning/Pages/PennDOT-Connects.aspx



General Project Development Flowchart

Locally Sponsored Projects



2021 Funding Schedule

2021 Calendar of Programs Anticipated Application Opening & Closing Dates*

| Jan. | Feb. | March | April | May | June | July | Aug. | Sep. | Oct. | Nov. | Dec. |
|-------------|-----------------|-----------------|-----------------|-------------------------------------|--------------------|-------------|---|-------------|-------------|-------------|-------------|
| | Act 13 Programs | Act 13 Programs | Act 13 Programs | Act 13 Programs | | | | | | | |
| | | | | | | | SPC TASA Application Period Anticipated Fall 2021 | | | | |
| | | | | DCED MTF Application Period TBD | | | | | | | |
| PennDOT PIB | PennDOT PIB | PennDOT PIB | PennDOT PIB | PennDOT PIB | PennDOT PIB | PennDOT PIB | PennDOT PIB | PennDOT PIB | PennDOT PIB | PennDOT PIB | PennDOT PIB |
| | | | | | PennDOT ARLE (TBD) | | | | | | |
| | | | | | | | CMAQ Application Period Anticipated Fall 2021 | | | | |
| DCNR C1P2 | DCNR C2P2 | DCNR C2P2 | DCNR C2P2 | | | | | | | | |
| | | | | PennDOT MTF Application Period TBD | | | | | | | |
| | | | | GreenLight-Go (Deadline Varies) | | | | | | | |
| | | | | PA WalkWorks Application Period TBD | | | | | | | |

*Funding programs and the agencies that administer them often times will alter anticipated application periods. Contact these agencies or SPC for up-to-date application information.

Thank you!

Lillian Gabreski

Project Development Planner

(412) 391-5590 x327

lgabreski@spcregion.org

